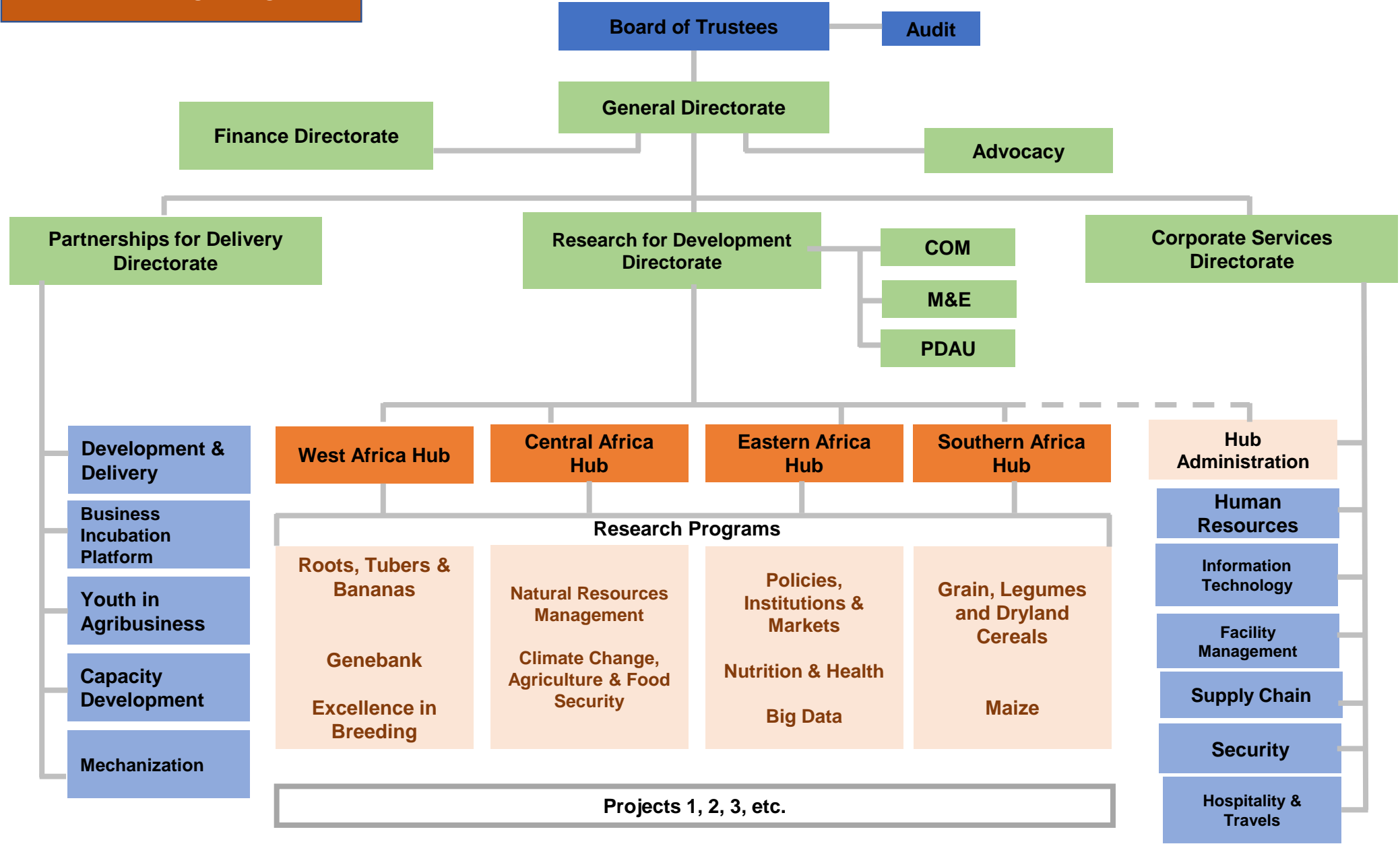


# Revised Organogram



**Board of Trustees**

**Audit**

**General Directorate**

**Finance Directorate**

**Advocacy**

**Partnerships for Delivery Directorate**

**Research for Development Directorate**

**COM**

**M&E**

**PDAU**

**Corporate Services Directorate**

**West Africa Hub**

**Central Africa Hub**

**Eastern Africa Hub**

**Southern Africa Hub**

**Hub Administration**

**Research Programs**

**Roots, Tubers & Bananas**  
Genebank  
Excellence in Breeding

**Natural Resources Management**  
Climate Change, Agriculture & Food Security

**Policies, Institutions & Markets**  
Nutrition & Health  
Big Data

**Grain, Legumes and Dryland Cereals**  
Maize

**Projects 1, 2, 3, etc.**

**Development & Delivery**

**Business Incubation Platform**

**Youth in Agribusiness**

**Capacity Development**

**Mechanization**

**Human Resources**

**Information Technology**

**Facility Management**

**Supply Chain**

**Security**

**Hospitality & Travels**