

# GREAT LAKES ACCELERATED INNOVATION DELIVERY INITIATIVE RAPID DELIVERY HUB (AID-I GLR)

## PROJECT SUMMARY

The Great Lakes Accelerated Innovation Delivery Initiative Rapid Delivery Hub (AID-I GLR) is a two-year, multiple-stakeholder initiative funded by the United States Agency for International Development (USAID) and led by the International Institute of Tropical Agriculture (IITA). The initiative is part of the United States' response to address the immediate and long-term effects of the global food security crisis. The goal of AID-I GLR is to contribute to improving food and nutrition security in the region through the rapid adoption at scale of proven technologies and innovations developed mainly by CGIAR and partners. It is slated to reach 1.2 million farming households in Burundi, the Democratic Republic of Congo (DRC), and Rwanda. AID-I GLR identifies options for scaling partnerships with the active private sector, government agencies, and non-governmental organizations whilst structuring those partnerships to deliver rapidly proven technologies adapted to local needs to a large network of farmers with advisory services.

### OBJECTIVES:

To equitably increase the availability and accessibility of proven agricultural and nutritional practices and technologies to farming households



To increase the use and adoption of good agricultural and nutritional practices and technologies to enhance productivity and consumption of nutritious food products equitably among farming households

At least

**5**

scaling partnerships formed in 3 countries.



At least

**1.2 million**

farming households accessed proven agricultural and nutritional practices and technologies.



**3**

countries:



DRC

Rwanda

Burundi

The total direct investment anticipated is

**\$21.8 million**

for 2 years



## APPROACH

This Initiative is doing business differently, focusing only on technologies demanded by scaling partners leading the delivery effort. It also offers the opportunity for scaling partners to use each network to reach a large number of diverse groups of smallholder farmers including, women, men and youth with impactful core and complementary interventions. Market actors such as seed companies and other agricultural input producers and agro-dealers run mother demonstration plots on technologies and practices and produce small packs of inputs (e.g., seeds, fertilizers, and soil amendments) for distribution to women, men and youth smallholder farmers with advisory information to test on their farms as part of the promotional activities to expand their market. The partnerships also rely on the network of national extension systems, Savings and Internal Lending Schemes, and nutrition programs.



Facilitation of partnerships across public and private organizations with a large network of women and men farmers.



Assemble, adapt, and avail packages of proven agricultural and nutritional practices and technologies to scaling partners.



Provide advisory information on proven agricultural and nutritional practices and technologies to women and men farmers through multiple sources.



Train women and men farmers on proven agricultural and nutritional practices and technologies.



Strengthen the input systems by enhancing the capacities of seed companies and other input suppliers to organize the last-mile delivery of innovations.

## ACTIVITIES

# PROVEN INNOVATIONS AND TECHNOLOGIES

The project has so far established partnerships with two dozen of NGOs, private companies, innovation developers, and service providers in Burundi, the DRC, and Rwanda that are delivering quality seeds of improved varieties of food security and nutrition crops (beans, orange-fleshed sweet potato, maize, cassava, potato, rice, banana, cassava and vegetables), poultry, forage and veterinary products, fertilizers, and soil amendments. Other complementary interventions include advisory services and social behavior change campaigns on nutrition.



## Beans

Micro-nutrient rich (iron and zinc), farmer and consumer-preferred bean varieties



## Rice

- ✓ High-quality seed of improved varieties
- ✓ System of rice intensification, smart-valleys, intergrated soil fertility management
- ✓ Postharvest management
- ✓ Improved processing processes



## Poultry

- ✓ Improved chick breeds
- ✓ Immunization



## Cassava

- ✓ Disease-resistant and disease-tolerant varieties
- ✓ Postharvest management



## Livestock

- ✓ Animal feeding
- ✓ Artificial insemination
- ✓ Immunization



## Orange-fleshed sweet potatoes

- ✓ Climate-smart, vitamin A rich, orange-fleshed sweet potato varieties
- ✓ Tuber conservation and processing



## Maize

- ✓ Hybrid maize varieties
- ✓ Bioprotectant to control aflatoxin contamination (Aflasafe)
- ✓ Quality and safe maize flour



## Bananas

Disease-resistant banana varieties



## Vegetables

- ✓ High-quality seed of improved varieties of tomatoes, onions, garlic, amaranth, African eggplants, carrots, cabbages, spinach, beetroots, eggplant
- ✓ Protected cultivation using low and high tunnels
- ✓ Vegetable cooling and drying



## Potatoes

Robust clean seed with high yield, resistance to late blight, water use efficiency, earliness, virus resistance, and heat tolerance

## Cross-cutting interventions

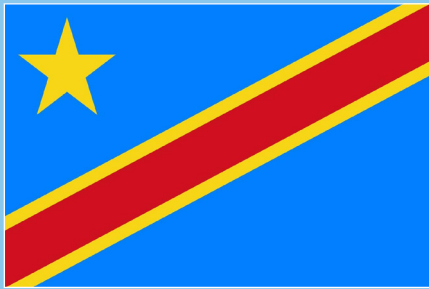
- ✓ High-quality processed and packaged lime, based on soil requirements
- ✓ Good agricultural practices, including use of fertilizer, manure and compost
- ✓ Social behavior change messaging on food security and nutrition

# GENDER AND SOCIAL INCLUSION

AID-I GLR aims to reach more women, men, youth, and other social groups through their identification and selection as beneficiaries. There are efforts to also promote gender transformative approaches through capacity strengthening and awareness creation on social and behavioral change.



**COUNTRY: DEMOCRATIC REPUBLIC OF CONGO**



In DRC, AID-I GLR has facilitated one partnership to deliver technologies and innovations to farming households, with technical assistance from CGIAR centers and service providers, in alignment and collaboration with *Institut National pour l'Etude et la Recherche Agronomique* (L'INERA). The partnership is led by RIKOLTO working with *Service d'Accompagnement et de Renforcement des Capacités d'Autopromotion de la Femme au Sud-Kivu* (SARCAF), *Vétérinaires Sans Frontières* (VSF), Agriforce, and Ets MUNGA

The International Potato Center (CIP), International Rice Research Institute (IRRI), International Livestock Research Institute (ILRI), World Vegetable Center (WorldVeg), Alliance of Bioersity International and CIAT (The Alliance), and IITA are the main innovation developers providing technical assistance to the scaling partners. The Science Animation Without Borders (SAWBO) supports the delivery of advisory information.

**TARGET AREAS, VALUE CHAINS, ACTIVITIES, AND REACH**

The partnership works to increase farming household's use and adoption of good agricultural and nutritional practices and technologies in six territories of the South-Kivu Province, namely Idjwi, Kalehe, Kabare, Walungu, Uvira and Mwenga.

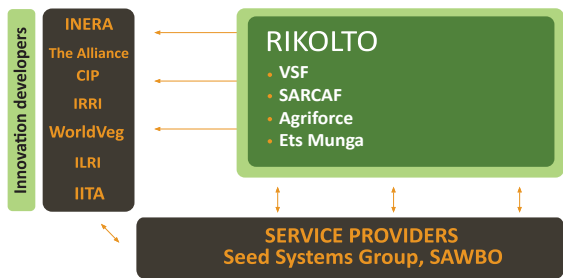
In these locations, the partnership supports and accelerates the adoption of the improved innovations for the selected value chains such as cassava, rice, banana, orange-fleshed sweet potato, beans, vegetables (tomato, onion, garlic, amaranth, African eggs plants, carrots, cabbages), and milk.

AID-I GLR also partners with Seed Systems Group (SSG) to strengthen the nascent seed system, by working with the public sector to increase the availability of early generation genetic materials and by building the capacity of seed companies to produce, market, and distribute high-quality seeds of improved varieties.

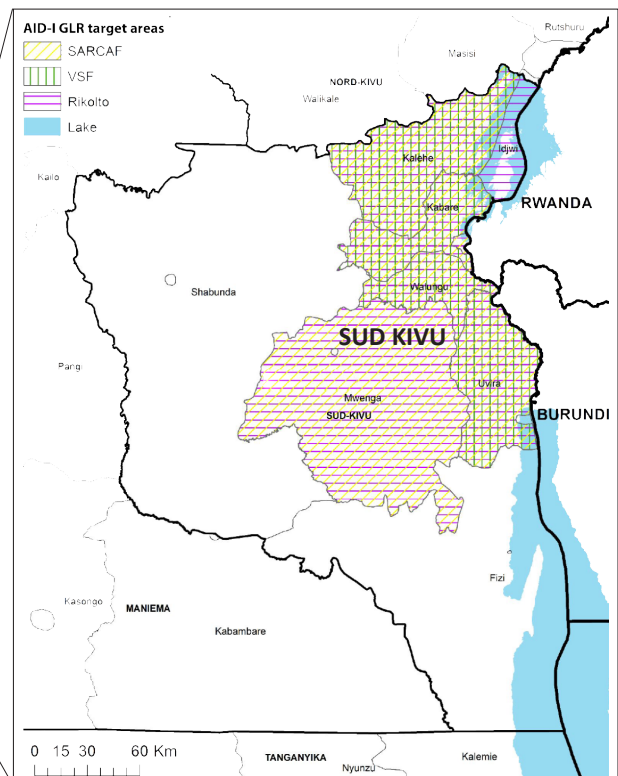
This partnership expects to reach 240,000 households within two years.

 **240,000**  
households to be reached

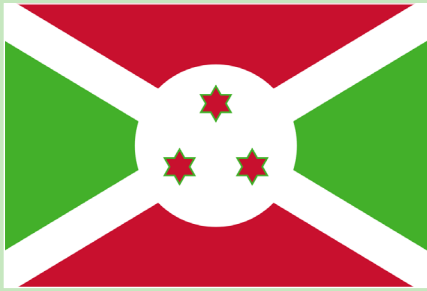
**Overall coordination: IITA**



**Alignment and collaboration with INERA**



## COUNTRY: BURUNDI



In Burundi, AID-I GLR has facilitated two partnerships to deliver technologies and innovations to farming households, with technical assistance from CGIAR centers and service providers, and in alignment and collaboration with the national agricultural research system, and the Ministry of Environment, Agriculture and Livestock and *Institut des Sciences Agronomiques du Burundi* (l'ISABU).

Partnership 1: Led by World Vision (WVision) with Welt Hunger Hilfe (WHH) and the Agency for Cooperation and Research in Development (ACORD)

Partnership 2: Led by *Confédération des Associations des Producteurs Agricoles pour le Développement* (CAPAD), and World Food Programme (WFP).

The International Potato Center (CIP), International Rice Research Institute (IRRI), International Livestock Research Institute (ILRI), Alliance of Bioversity International and CIAT (The Alliance), IITA and ISABU are the main innovation developers providing technical assistance to the scaling partners. The Science Animation Without Borders (SAWBO) supports the delivery of advisory information.

 **500,000**  
households to be reached

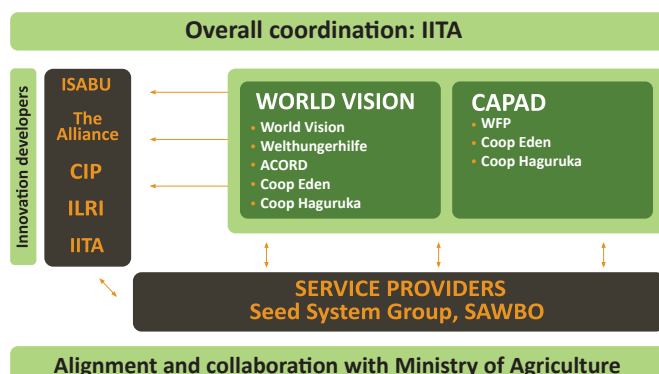
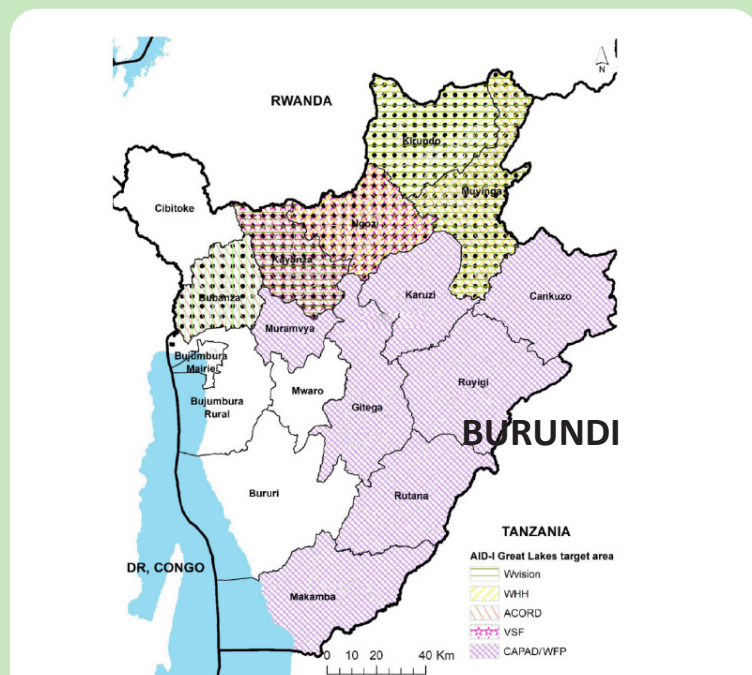
## TARGET AREAS, VALUE CHAINS, ACTIVITIES, AND REACH

The CAPAD-led partnership focuses on the Eastern Region (Ruyigi, and Makamba provinces) and Central Region (Gitega Karusi, Muramvya provinces) of the country, while the WVision-led partnership targets Kayanza, Ngozi, Muyinga, Cibitoke, Bubanza, and Kirundo provinces in the Northern Region, which are severely affected by malnutrition and stunting in the country. The partnerships work on beans, rice, milk, maize, cassava, bananas, orange-fleshed sweet potato, and poultry value chains in these locations in close collaboration with private sector.

Regarding livestock, farmers are supported to improve their breed through artificial insemination practices and to control common diseases.

AID-I GLR also partners with SSG to strengthen the nascent seed system, by working with the public sector to increase the availability of early generation genetic materials and by building the capacity of seed companies to produce, market, and distribute high-quality seeds of improved varieties.

These partnerships expect to reach 500,000 households within two years.



# CONTACT PERSONS

## IITA

---



### Rwanda

**Matieyedou Konlambigue**  
*Chief of Party*

[m.konlambigue@cgiar.org](mailto:m.konlambigue@cgiar.org)



### Burundi

**Patrick Mutuo**  
*Country Manager*

[pk.mutuo@cgiar.org](mailto:pk.mutuo@cgiar.org)



### DR Congo

**Jacob Mignouna**  
*Country Manager*

[j.mignouna@cgiar.org](mailto:j.mignouna@cgiar.org)

## USAID

---

### **Bureau of Resilience, Environment, and Food Security (REFS)**

Rob Bertram, *Chief Scientist* - ([rbertram@usaid.gov](mailto:rbertram@usaid.gov))

Jerry Glover, *Deputy Director, REFS/Center for Agriculture (CA)* - ([jglover@usaid.gov](mailto:jglover@usaid.gov))

### **USAID Rwanda Mission:**

Evan Meyer, *Deputy Director, Economic Growth Office* ([emeyer@usaid.gov](mailto:emeyer@usaid.gov))

### **USAID Burundi Mission**

Lori Du Trieuille, *Head of the Sustainable Development Office* ([ldutrieuille@usaid.gov](mailto:ldutrieuille@usaid.gov))

### **USAID Democratic Republic of the Congo Mission**

Surendra Bhatta, *Senior Advisor, Economic Growth Office* ([sbhatta@usaid.gov](mailto:sbhatta@usaid.gov))

# PROJECT PARTNERS

## Innovation developers



## Scaling partners



Coop Eden

Coop Haguruka

Ets Munga

SPF-IKIGEGA

## Service providers



## Donor



# FEED THE FUTURE

The U.S. Government's Global Hunger & Food Security Initiative

[feedthefuture.gov](http://feedthefuture.gov)



*For more details, visit our webpage here*

<https://www.iita.org/great-lakes-accelerated-innovation-delivery-initiative-rapid-delivery-hub/>

Or scan the QR code

