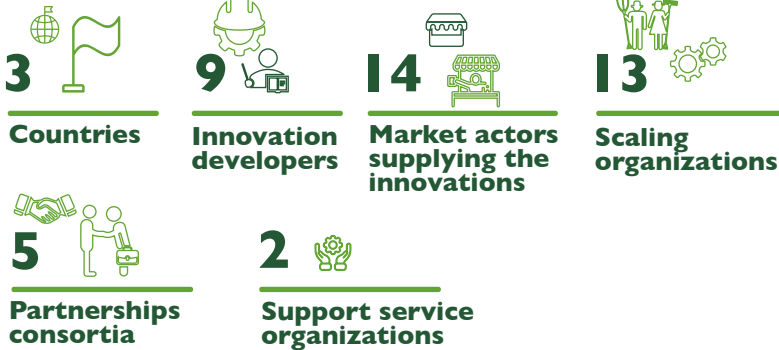


# Great Lakes Accelerated Innovation Delivery Initiative Rapid Delivery Hub (AID-I GLR)

October 2022-December 2023

## PARTNERSHIPS



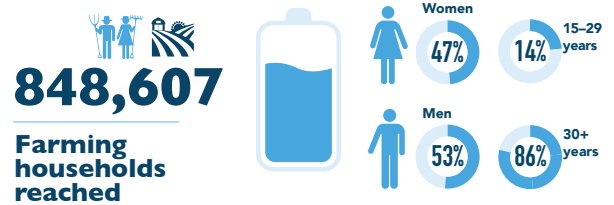
## INNOVATIONS AND PRACTICES



## TARGET (WITHIN 2 YEARS)



## REACH BY 30 DECEMBER 2023



**702,354**



Farmers accessed improved agricultural technologies with advisory information through small packs



**330,621**  
Females



**106,239**  
Youth



**371,733**  
Males



**596,115**  
Adults

**2,240**



Metric tons of inputs sold by market actors valued at

**\$733,841**



**83.7**



Metric tons of Early Generation Seeds (EGS) produced and supplied to market actors

More information about AID-I Great Lakes, click [here](#)